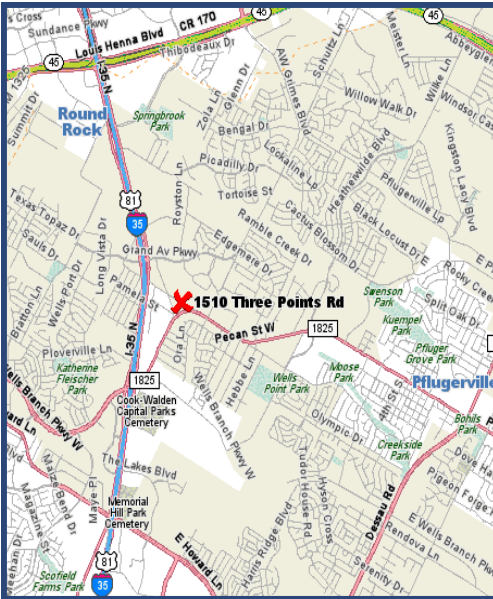


FOR LEASE



1510 Three Points Pflugerville | Texas | 78660

- Located at the intersection of FM 1825 (Pecan St.) and Three Points Rd. in Pflugerville.
- 2,964 SF office/warehouse building.
 - Office: 1,620 SF (27' x 60').
 - Warehouse: 1,344 SF (28' x 48').
- Perfect for contractor's office, engineering office, and light industrial uses.
- One grade level door.
- Zoned: Light Industrial.
- Rate: \$.65 - \$.75 PSF

1000 N. IH-35, Suite A | Round Rock | TX | 78681

Phone 512.255.3000

www.DonQuick.com

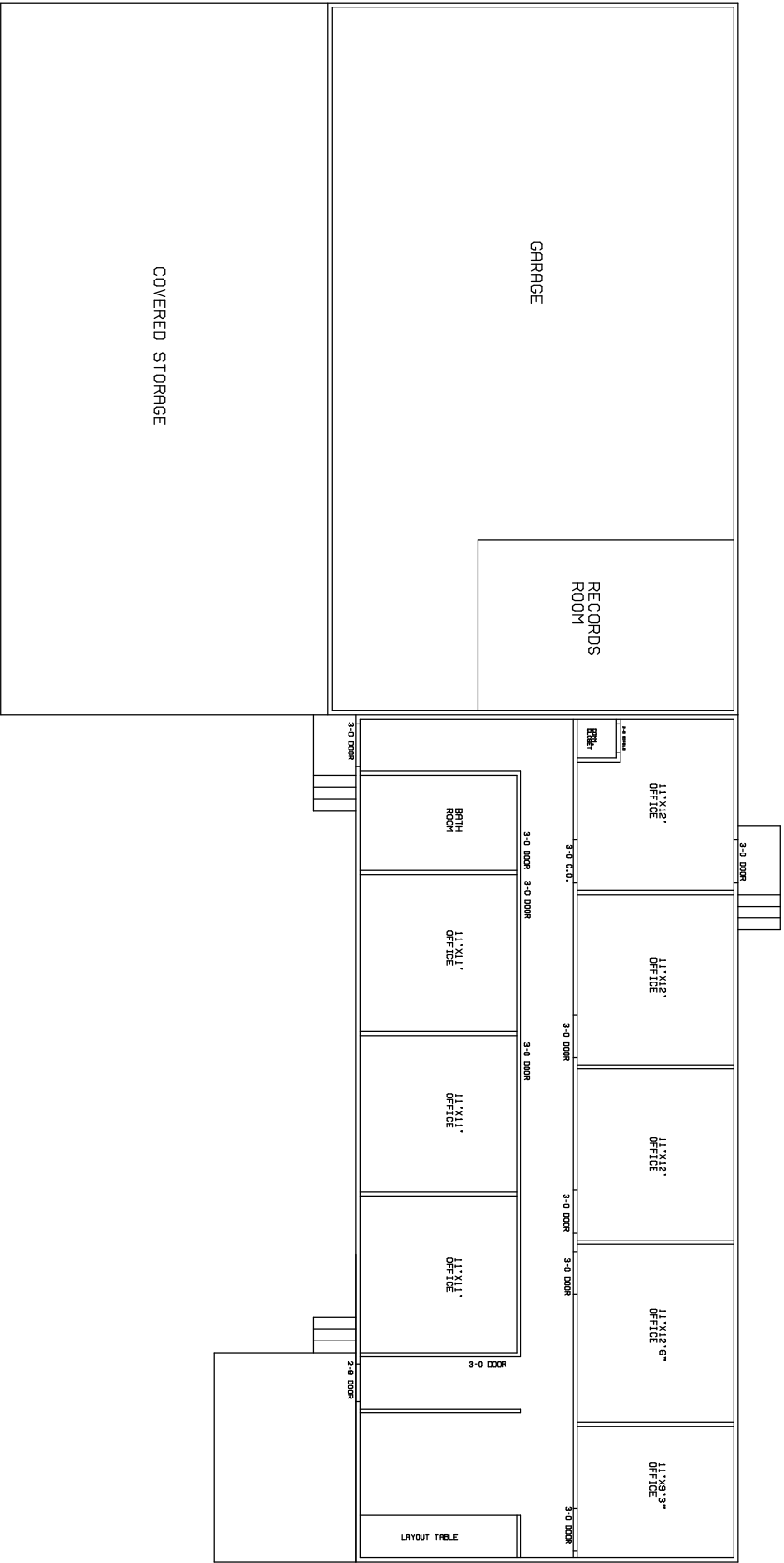
The material contained in this memorandum is based in part upon information furnished to Don Quick & Associates, Inc. by sources deemed to be reliable. The information is believed to be accurate in all material respects, but no representation or warranty, expressed or implied, as to list accuracy or completeness is made by any party. Nothing contained herein should be relied upon as a promise or representation as to the future. Recipients should conduct their own investigation and analysis of the information described herein.

**DON
QUICK**
& associates, inc.

Contact

Brent Campbell, Realtor®
512.255.3000

Brent@donquick.com



JOB NO: OFFICE1	Customer: 1510 THREE POINTS DR Address: 1510 THREE POINTS DR Description: OFFICE Designer: Fill in later Date: 07-27-2009	PAGE NO: 1 OF 1
--------------------	---	--------------------