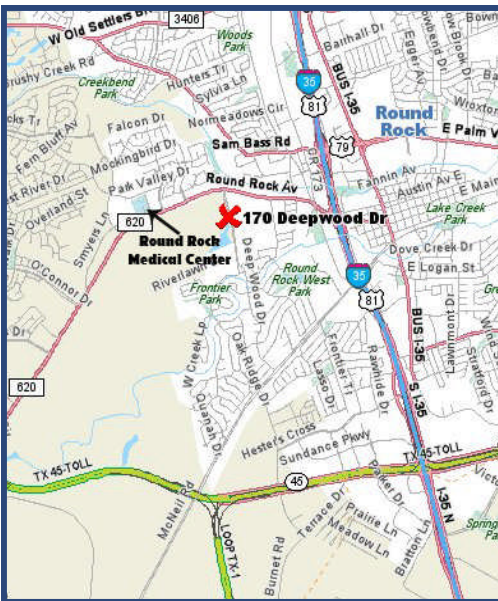


FOR SALE or FOR LEASE



Deepwood Professional Center

170 Deepwood Drive
Round Rock | Texas | 78681

- Located just off RR 620, near St. David's Round Rock Medical Center. Easy access to IH 35, SH 45 and Loop 1.
- This center features first generation medical and professional condominiums available for sale or for lease. Units area available finished out or in shell condition.
- This Mediterranean style, single story building offers easy access for patients and clients.
- Park-like setting.
- Medical parking available.
- Currently 2 condos available for sale or for lease.
- Please call for pricing.

**DON
QUICK**
& associates, inc.

Contact
Dan Carlson, Realtor®
512.255.3000
DanC@donquicks.com

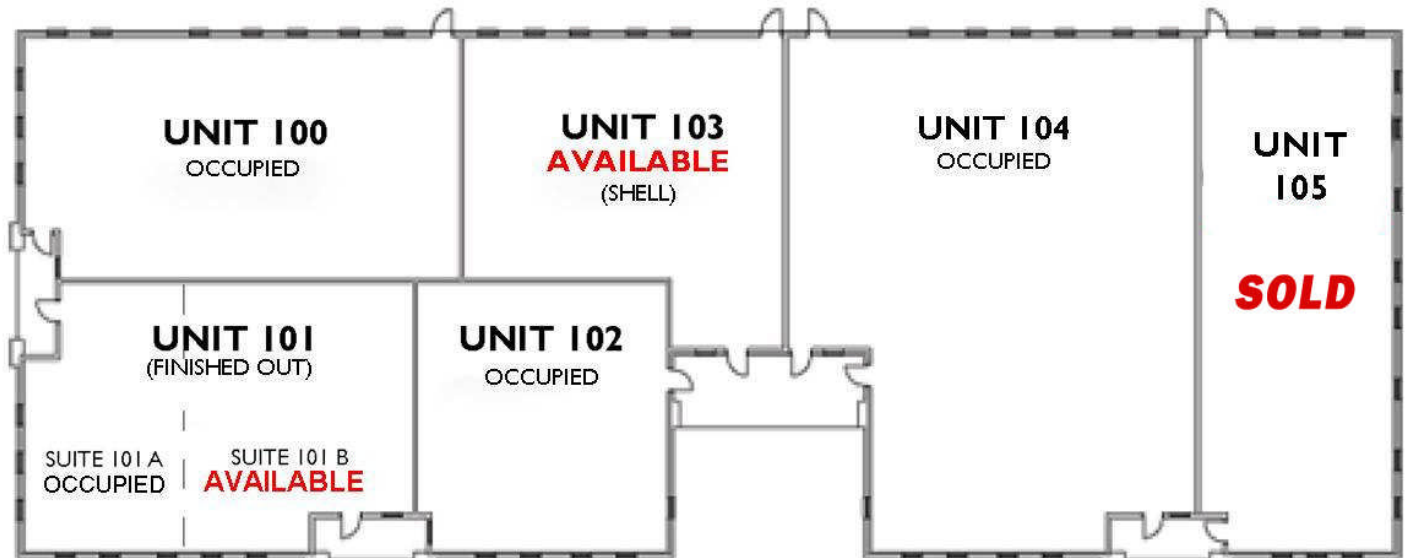
1000 N. IH-35, Suite A | Round Rock | TX | 78681

Phone 512.255.3000

www.DonQuick.com

The material contained in this memorandum is based in part upon information furnished to Don Quick & Associates, Inc. by sources deemed to be reliable. The information is believed to be accurate in all material respects, but no representation or warranty, expressed or implied, as to list accuracy or completeness is made by any party. Nothing contained herein should be relied upon as a promise or representation as to the future. Recipients should conduct their own investigation and analysis of the information described herein.

Entire Building - Floor Plan

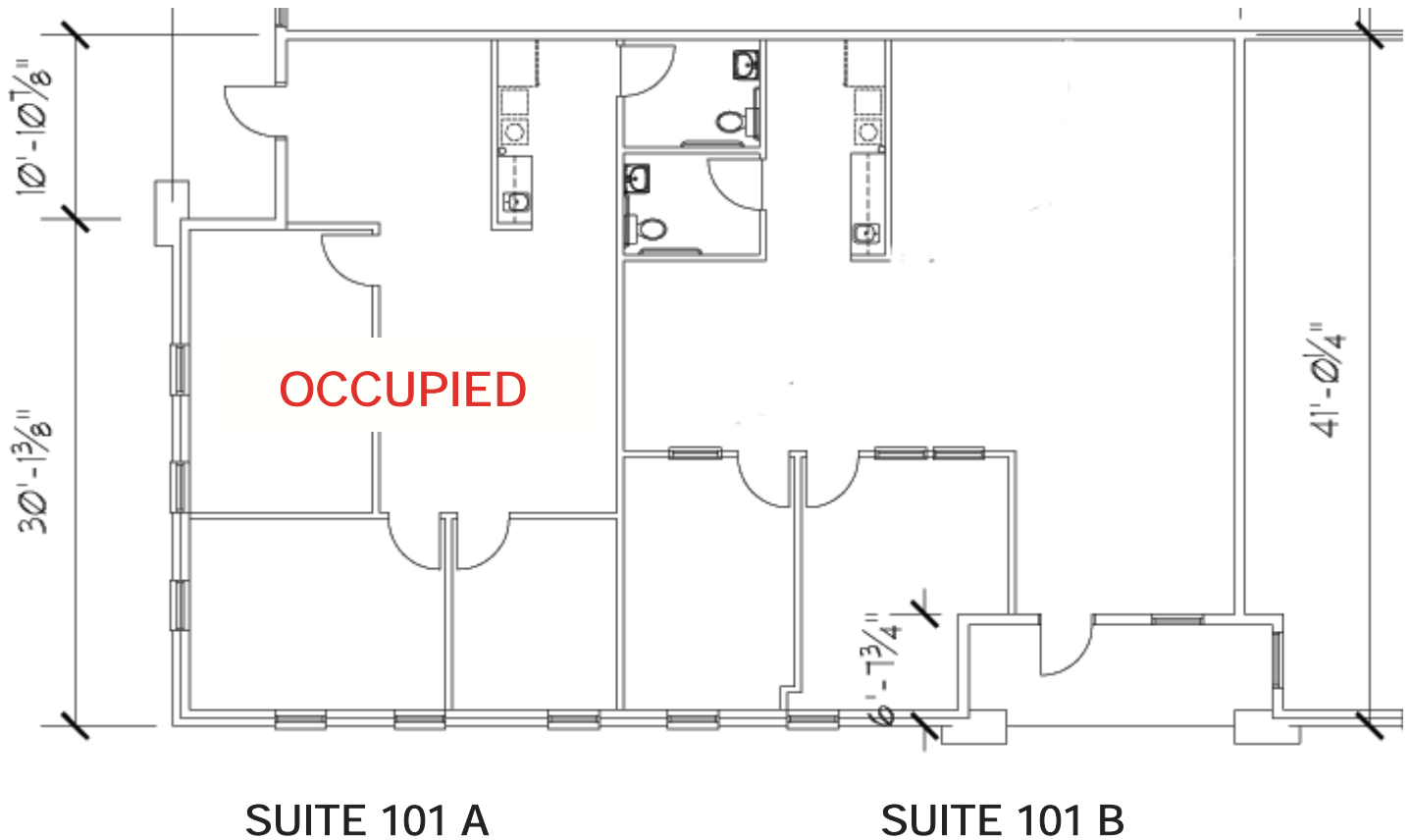


Availability - For Sale or For Lease

- Unit 101: 2,401 total SF - split into two fully finished-out suites.
 - Suite 101 A: 1,066 SF (occupied).
 - Suite 101 B: 1,335 SF.
- Unit 103: 1,825 SF in shell condition.
- Unit 105: 2,454 SF in shell condition.
- All square feet and measurements are approximate.

Deepwood Professional Center

UNIT 101



Unit 101 - For Sale or For Lease

- 101 A: 1,066 SF occupied.
- 101 B: 1,335 SF move-in ready.
- Both suites are finished out with crown molding, cove ceilings, and granite counter top.
- Break room in each suite.
- All square feet and measurements are approximate.

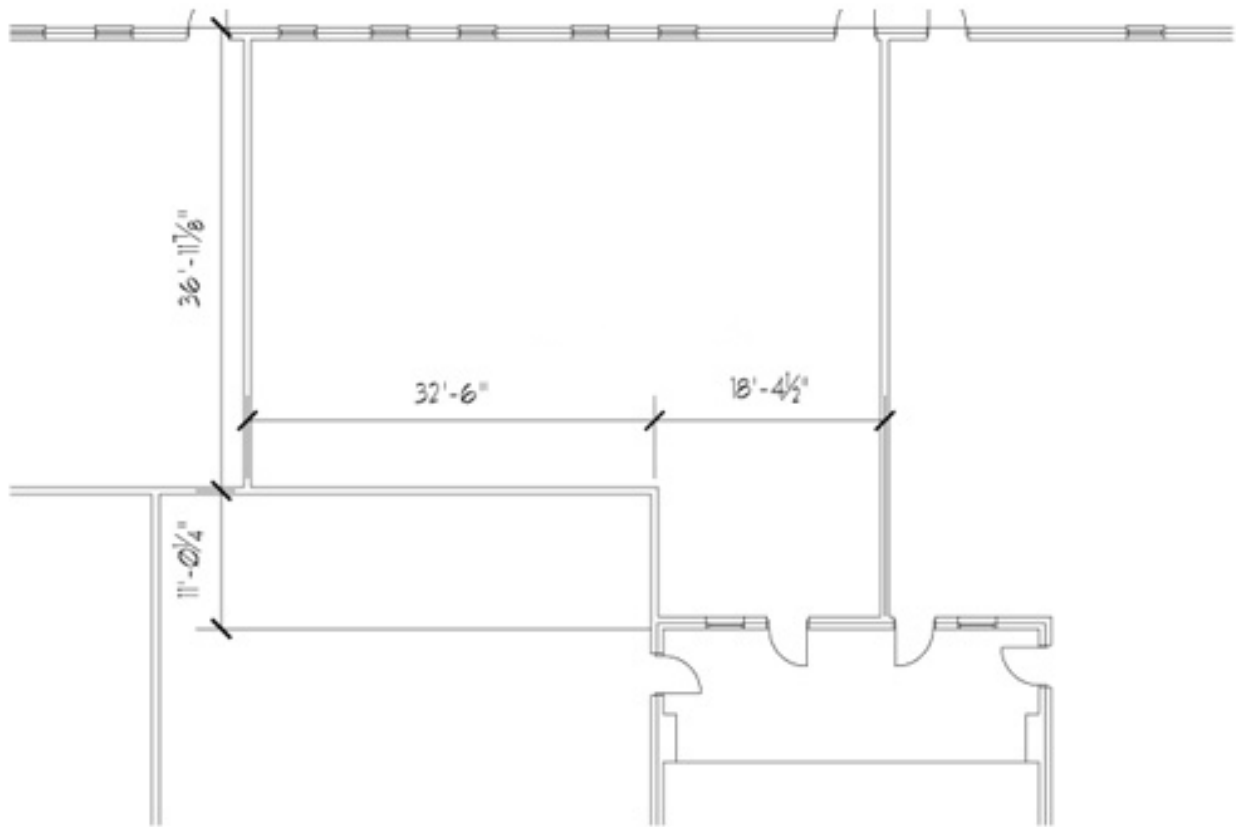
**DON
QUICK**
& associates, inc.

1000 N. IH-35, Suite A | Round Rock | TX | 78681
Phone 512.255.3000

www.DonQuick.com

The material contained in this memorandum is based in part upon information furnished to Don Quick & Associates, Inc. by sources deemed to be reliable. The information is believed to be accurate in all material respects, but no representation or warranty, expressed or implied, as to list accuracy or completeness is made by any party. Nothing contained herein should be relied upon as a promise or representation as to the future. Recipients should conduct their own investigation and analysis of the information described herein.

UNIT 103



Unit 103 - For Sale or For Lease

- Unit 103: 1,825 SF.
- Shell condition, ready for custom build out.
- Efficient floor plan.
- All square feet and measurements are approximate.



1000 N. IH-35, Suite A | Round Rock | TX | 78681
Phone 512.255.3000 www.DonQuick.com

The material contained in this memorandum is based in part upon information furnished to Don Quick & Associates, Inc. by sources deemed to be reliable. The information is believed to be accurate in all material respects, but no representation or warranty, expressed or implied, as to list accuracy or completeness is made by any party. Nothing contained herein should be relied upon as a promise or representation as to the future. Recipients should conduct their own investigation and analysis of the information described herein.